

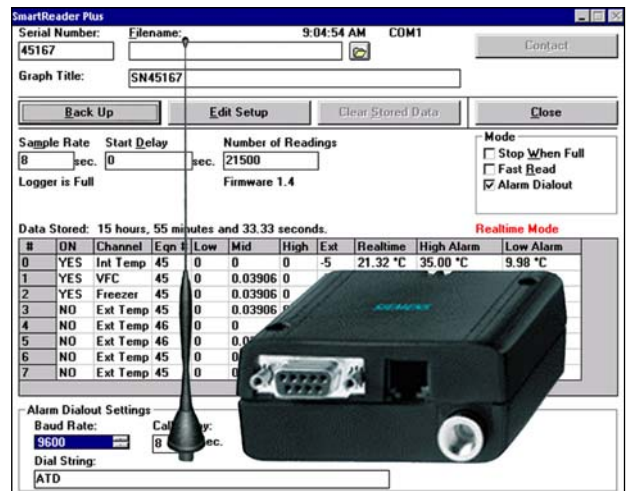
INTRODUCTION

Remote GSM modem that allows the SL700 series data loggers to be connected to the telephone system where conventional telephone lines are either not installed or harsh environments that would make installation too expensive. Using the GSM mobile telephone network, data can be retrieved from a data logger positioned almost anywhere in the world*

The GSM modem can be used as a remote alarm unit, automatically dialling out to a mobile telephone or pager if predetermined alarms settings are exceeded.

The SL-ACC19 can be powered with any DC supply between 6V and 24V or with the mains adaptor supplied.

The SL-ACC19 can be used with any GSM compatible SIM card. (not supplied)



SPECIFICATIONS

Compliant to GSM phase 2/2+

Output power:	Class 4 (2W) at EGSM900 Class 1 (1W) at GSM1800 Control via AT commands
Approvals:	R&TTE with reference equipment GCF approval
Supply voltage range:	8V - 30V
Dimensions:	65 x 74 x 33 mm
Weight:	130 g
Interfaces:	Plug-in power supply Handset audio interface (No handset) Mini-SIM card reader Antenna connector FME (male) V.24/V.28 interface on the 9-terminal Sub-D-socket Operating status LED Ignition lead on the 6-pin Western connector



Using Solar Panels, truly Remote installations are possible

* Where GSM coverage is provided

APPLICATIONS

- Remote monitoring of storage tanks
- Monitoring flow meters
- Checking river and reservoir levels
- Monitoring fridges and freezers

ORDER CODE

SL-ACC19

Dual-band EGSM900 and GSM1800

Every effort has been taken to ensure the accuracy of this specification, however we do not accept responsibility for damage, injury, loss or expense resulting from errors and omissions, and we reserve the right of amendment without notice.

Signatrol.com
Data Logging Solutions