

INTRODUCTION

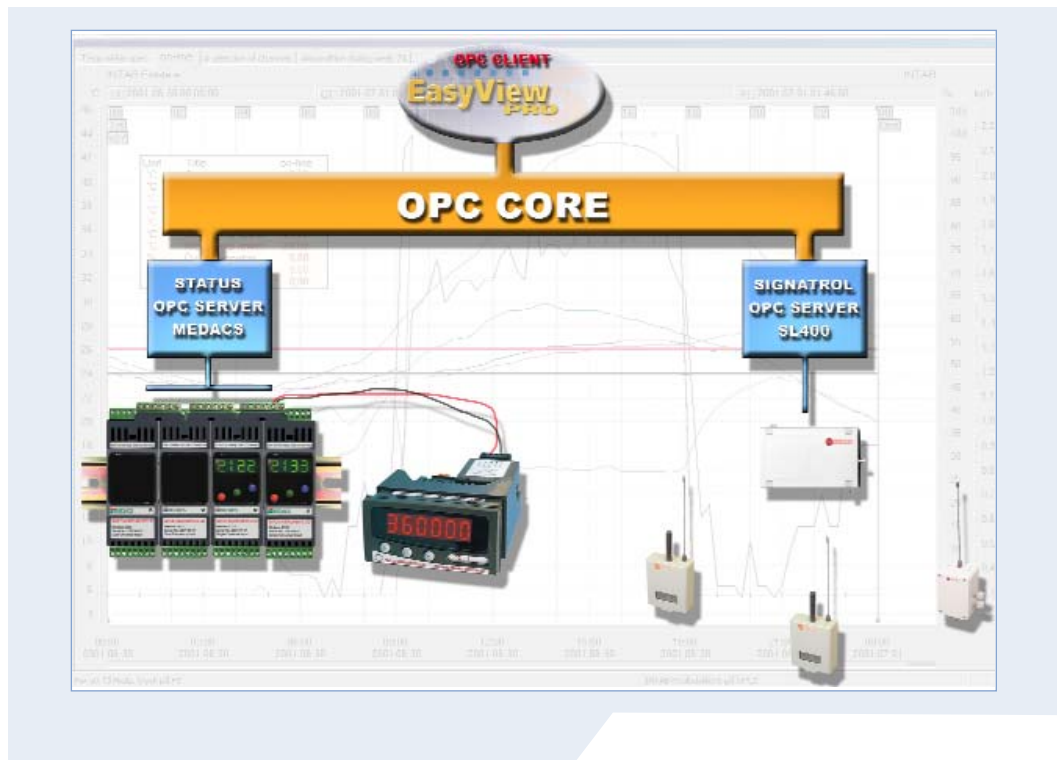
The SL1000-software is used for the configuration and data retrieval from the SL1000 series, SL2100 series data loggers and the MEDACS range of signal conditioners via the OPC platform. The software has features and functions for the very demanding scientist or engineer without being over complicated for non-technical users.

Wizards are used to configure the data logger or OPC client, guiding the operator in the right direction and showing the options available. This means that the configuration of the data logger or OPC client is quick and straight-forward.

Managed by the OPC Foundation, OPC (Object linking and embedding for Process Control) is an industry standard created with the collaboration of a number of leading worldwide automation and hardware/ software suppliers working in co-operation with Microsoft.

The goal of the standard is 'Plug-and-Play'. By using the standard OPC client-server model, any OPC-compliant device will quickly, easily and seamlessly connect to another and immediately work without the need for lengthy installation procedures. The user can then concentrate more on the chosen client software package (e.g. DCS, SCADA, HMI, Plant Scheduling) rather than the problems of system integration.

The application of the OPC standard interface makes possible interoperability between automation/ control applications, field systems/ devices and business/ office applications.

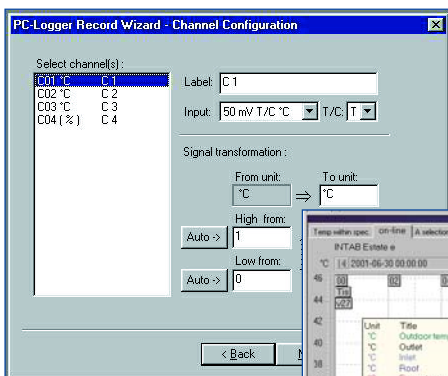


During logging, data can be represented on screen in realtime with either graphs, data table or a summary panel which identifies high, low, average and current readings. Within the realtime graphs multiple tabs can be shown, each representing different areas of interest with each tab totally independent from any other, allowing different time bases and individual channels to be turned on or off.

Once the data has been downloaded from the memory of the data logger or accessed directly from the computer, the operator can zoom in on both X and Y axis. Notes can be added anywhere on the graph. Using the built in formula editor, channels can be added together or fixed lines added to the graph to indicate critical points.

There is even the possibility of adding photographs or diagrams of the process with locations of process variables updated in realtime numerical format. Graphs and data tables can be exported directly into word processor or spreadsheet documents by simply cutting and pasting, there is no need to save separate ASCII files.

TYPICAL EXAMPLE OF EASYVIEW GRAPH / WIZARDS

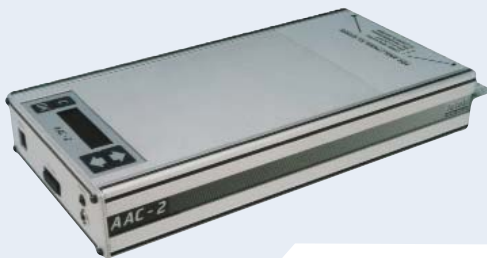


TYPICAL EXAMPLE OF AN EASYVIEW SOFTWARE PC
LOGGER RECORD WIZARD - CHANNEL CONFIGURATION



TYPICAL EXAMPLE OF AN EASYVIEW PC LOGGER
RECORD WIZARD - SAMPLING PARAMETERS

SL1000 DATA LOGGER
(FOR MORE INFORMATION SEE SEPARATE
HARDWARE DATA SHEET)



ORDER CODE

SL1000-SOFT*

Easyview Windows software for 95, 98, ME, NT, XP and 2000. For use with SL1000 and SL2100 data loggers only.

*Does not include OPC client for use with MEDACS.

SL1000-SOFT-OPC

Easyview Windows software for 95, 98, ME, NT, XP and 2000. For use with SL1000, SL2100 data loggers and MEDACS signal conditioners.