

Signatrol.com

Data Logging Solutions

USB Driver Installation Instruction Sheet

Signatrol Ltd,
105 Church Street
Tewkesbury
Gloucestershire
GL20 5AB
Telephone: 01684 299 399
Fax: 01684 299 375
Email: support@signatrol.com

If you are using the USB interface, please ensure TempIT is installed before connecting the USB device to the computer

Introduction

Before any USB device will operate correctly, it is important that the correct USB driver is installed. The screen shots provided are for the Vista operating system. Do not connect the USB device to the computer until instructed to do so. If you are unsure about any of these steps please consult an IT consultant

Requirements

TempIT4-Pro or TempIT4-Lite operating software on CD

Installing the software

Insert the TempIT4 software disk into the CD drive, which will auto run and guide you through the installation procedure. If downloaded from the web site, use explorer to highlight the setup.exe file and double click on the file.

The software will install as TempIT-lite. This can be converted to the TempIT-Pro software platform by inserting the appropriate enabling code, which will have been supplied or a codes can be purchased from the Signatrol sales department on 01684 299 399 or sales@signatrol.com.

Hardware Installation

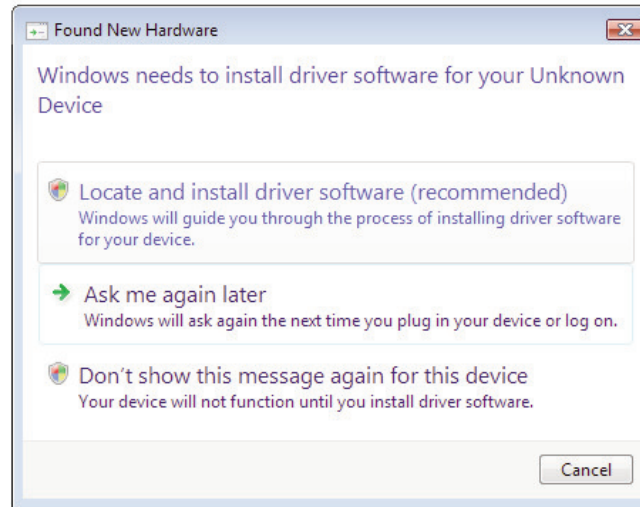
Once TempIT has been installed to the required level, connect the USB interface to the computer.

For 64 Bit operating systems, please turnover.

In the case of the SL5x button data loggers, you just need to plug in the blue USB interface with the curly cable attached.

For the SL7000 series data loggers you will need to first plug the USB lead into the data logger and then connect the other end to the computer.

The "Found new hardware" dialogue box will show:

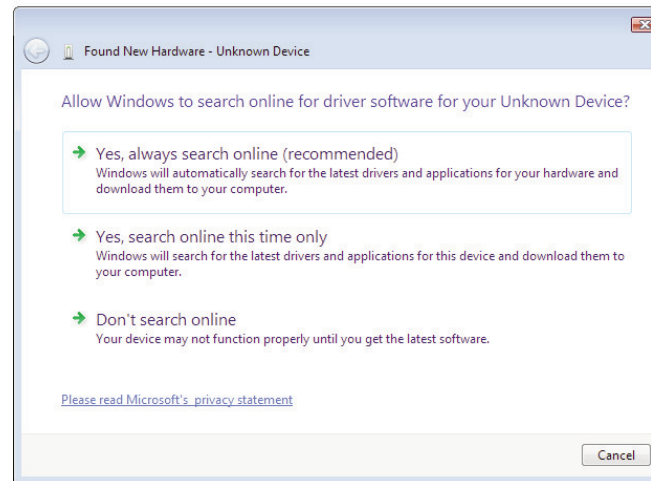


Select the first option - Locate and install driver software

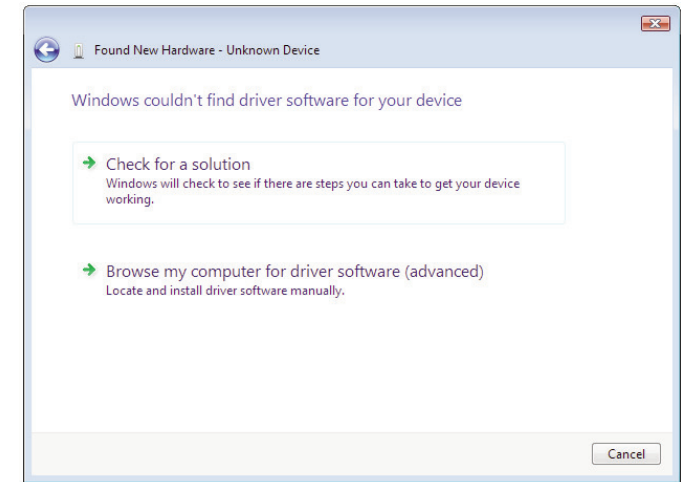
Windows may then ask for your permission to continue. Agree to this.

Next, you are asked where to search for the driver.

Select the third option, "Don't search online"



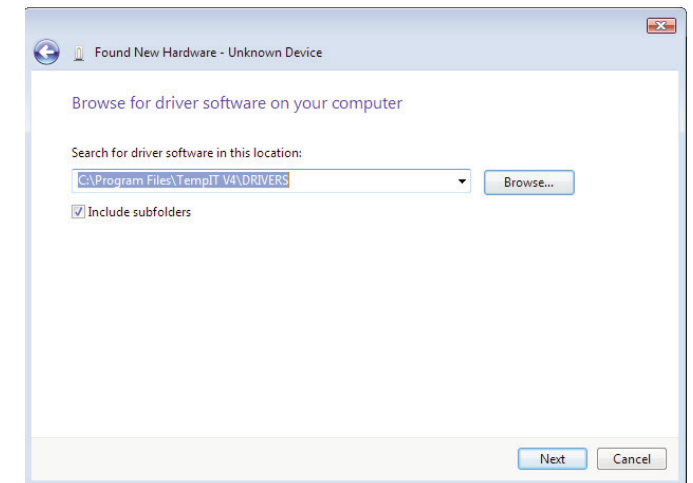
You should then be presented with the following screen



Choose the second option - Browse my computer for driver software.

When the following window pops up you will have to browse your computer to find the drivers on your computer. They will have been automatically copied to the computer during the installation of TempIT. In the following window, click on the Browse button and locate the following folder

C:\Program Files\TempIT V4\DRIVERS



Click Next to continue. Windows may then prompt you that the publisher of the driver is unknown. This is perfectly normal.

Select the second option - Install this driver software anyway.

Windows will then install the correct driver. Click close when the installation is complete.

64 Bit Operating Systems Installation Guide

The installation is different for the 64 bit operating systems like Vista and Windows 7.

Please Note: This is the installation procedure for 64 Bit operating systems when used with SL50 Series data loggers only.

Install TempIT from the CD or by downloading it from the Signatrol website.

Ensure the USB device is NOT connected to the computer and TempIT is NOT running.

Using Windows Explorer, navigate to:

C:\Program Files (x86)\TempIT V4\DRIVERS\ButtonX64

There should be a single file in this folder. Double click to run it.

Follow the on screen instructions.

Once the installation is complete, refer to the TempIT Quick Start document for operating instructions.